



AV1300

- 1.3 Mpixel IP-camera sensitive to 0.1 lux @ F1.4
- Frame Rate 30 fps @ Resolution 1,280 x 1,024

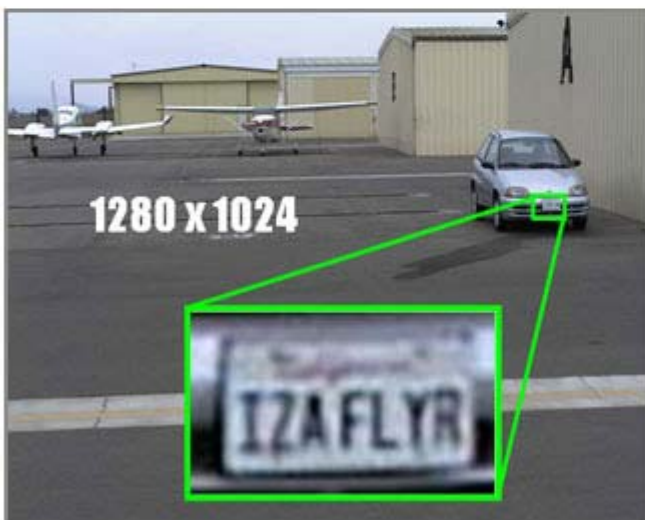
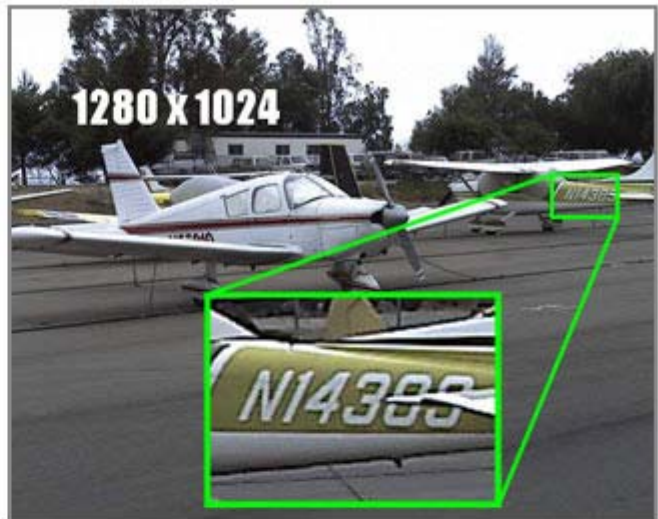
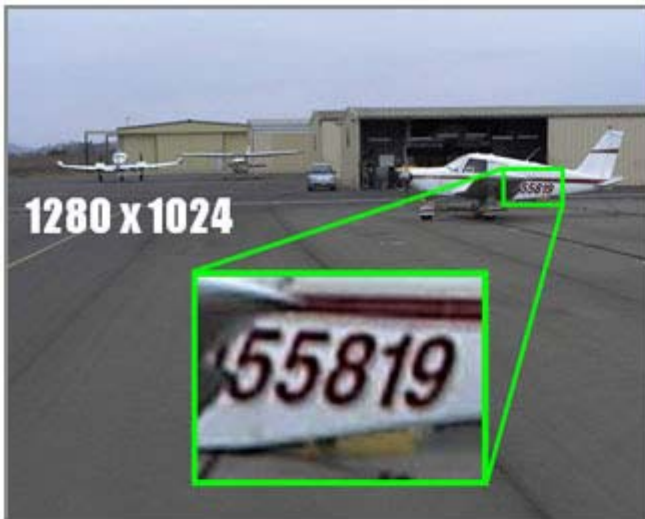
The AV-1300 offers cinema compatible high frame rates to allow real time high resolution digital video surveillance with 4 times the resolution of the best analog surveillance cameras.



The AV1300 supports compliant Power-over-Ethernet (POE) and auto-iris control functionality. The camera is delivering full motion progressive scan resolution and is priced comparably to analog video cameras.

The world's fastest IP-video systems from Arecont Vision are based on proprietary massively-parallel MegaVideo™ technology and take advantage of unique functionality unavailable with analog cameras.

AV1300 surveillance system has the ability to zoom after the event from high resolutions digital archives and the simultaneous viewing of zoomed and full field of view images.



Imaging

- 1.3 Megapixel CMOS Image Sensor
- 1280(H) x 1024(V) pixel array
- ½" optical format
- 4.2 µm pixel pitch
- Bayer mosaic RGB filter
- Sensitivity 0.1 lux @ F1.4
- Dynamic Range 60 dB
- Maximum SNR 45 dB

Data Transmission

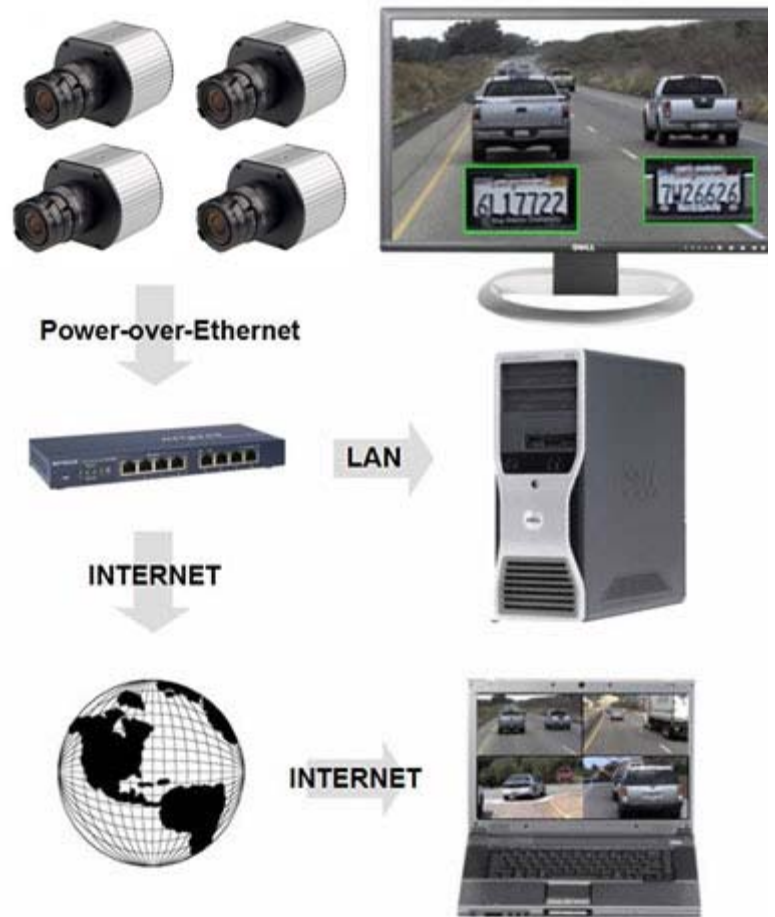
- Data Rate up to 45Mbps
- Video Frame Rate up to 30 fps @ 1280x1024
- Motion JPEG with 22 levels of quality
- TFTP Transmission Protocol
- 100Base-TX Ethernet Network Interface

Programmability

- Auto Exposure (AE) and Gain Control (AGC) >120dB
- Auto Backlight Compensation
- Auto Multi-Matrix White Balance
- 50/60Hz selectable Flicker Control
- Electronic Zoom, Pan & Tilt (PTZ)
- Electronic Image Rotation - up-side down image turn (mirror)
- Resolution windowing down to 32x32 pixels window
- Programmable Motion Blurring Control for Low-Light Mode
- Programmable Resolution, Brightness, Saturation, Gamma, Sharpness, Tint
- Picture-In-Picture: Simultaneous delivery of full field of view and zoomed images

Electrical

- Power over Ethernet (POE) or DC Input
- Compatible with IEEE 802.3af POE equipment
- 9V – 12VDC (2.1mm x 5.5mm, center positive)



- Power Consumption 4 Watts maximum

Regulatory Approvals

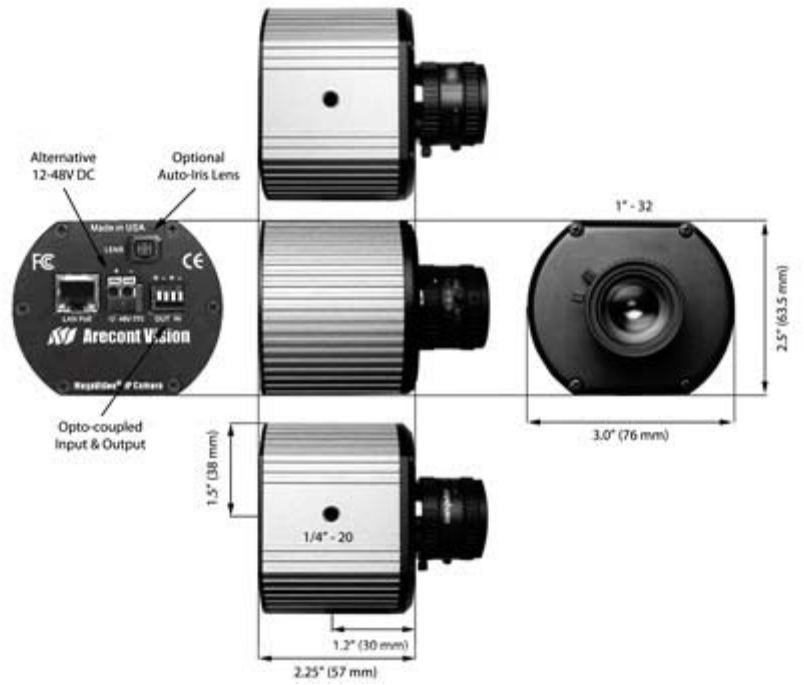
- FCC Part 15, Class A
- CE compliant

Mechanical

- 3"W x 2.5"H x 2.25" D (w/o lens)
- 1lb or 450 grams (w/o lens)

Environmental

- Operating Temperature 0°C to +50°C
- Storage Temperature -20°C to +60°C
- Humidity 0% to 90% (non condensing)



Arecont Vision reserves the right to change products or specifications without notice.



[Image Gallery...](#)

[Video Clips...](#)



[How to Buy...](#)